



**REGIONAL SPECIALISED METEOROLOGICAL CENTRE-TROPICAL CYCLONES, NEW DELHI
SPECIAL TROPICAL WEATHER OUTLOOK**

DEMS-RSMC TROPICAL CYCLONES NEW DELHI DATED 03.08.2023

SPECIAL TROPICAL WEATHER OUTLOOK FOR NORTH INDIAN OCEAN (THE BAY OF BENGAL AND THE ARABIAN SEA) VALID FOR NEXT 168 HOURS ISSUED AT 0600 UTC OF 03.08.2023 BASED ON 0300 UTC OF 03.08.2023.

(1) DEPRESSION OVER NORTH CHHATTISGARH & NEIGHBOURHOOD

THE DEPRESSION OVER NORTH CHHATTISGARH AND NEIGHBOURHOOD MOVED WEST-NORTHWESTWARDS WITH A SPEED OF 17 KMPH DURING PAST 6 HOURS AND LAY CENTRED AT 0300 UTC OF 03RD AUGUST, 2023 OVER THE SAME REGION NEAR LATITUDE 23.5°N AND LONGITUDE 83.1°E, ABOUT 40 KM NORTH-NORTHWEST OF AMBIKAPUR (CHHATTISGARH, 42693) AND 160 KM SOUTH-SOUTHEAST OF SIDHI (EAST MADHYA PRADESH, 42577).

IT IS LIKELY TO MOVE WEST-NORTHWESTWARDS TOWARDS NORTHEAST MADHYA PRADESH AND ADJOINING SOUTHEAST UTTAR PRADESH AND WEAKEN INTO A WELL MARKED LOW PRESSURE AREA DURING NEXT 12 HOURS.

ASSOCIATED SCATTERED TO BROKEN LOW AND MEDIUM CLOUDS WITH EMBEDDED INTENSE TO VERY INTENSE CONVECTION LAY OVER NORTH CHATTISHGARH, MADHYA PRADESH AND VIDARBHA. MINIMUM CLOUD TOP TEMPERATURE IS MINUS 88 DEGREE CELSIUS.

ASSOCIATED MAXIMUM SUSTAINED WIND SPEED IS 25 KNOTS GUSTING TO 35 KNOTS. ESTIMATED CENTRAL PRESSURE IS 993 HPA.

(2) BAY OF BENGAL:

SCATTERED TO BROKEN LOW AND MEDIUM CLOUDS WITH EMBEDDED INTENSE TO VERY INTENSE CONVECTION LAY OVER GULF OF MARTABAN. SCATTERED LOW & MEDIUM CLOUDS WITH EMBEDDED MODERATE TO INTENSE CONVECTION LAY OVER EAST BOB AND ANDAMAN SEA. SCATTERED LOW & MEDIUM CLOUDS WITH EMBEDDED WEAK TO MODERATE CONVECTION LAY OVER WESTCENTRAL.

PROBABILITY OF CYCLOGENESIS (FORMATION OF DEPRESSION) DURING NEXT 168 HRS:

24 HOURS	24-48 HOURS	48-72 HOURS	72-96 HOURS	96-120 HOURS	120-144 HOURS	144-168 HOURS
NIL	NIL	NIL	NIL	NIL	NIL	NIL

(3) ARABIAN SEA:

SCATTERED LOW AND MEDIUM CLOUDS WITH EMBEDDED ISOLATED WEAK TO MODERATE CONVECTION LAY OVER ARABIAN SEA AND LAKSHADWEEP ISLANDS AREA.

PROBABILITY OF CYCLOGENESIS (FORMATION OF DEPRESSION) DURING NEXT 168 HRS:

24 HOURS	24-48 HOURS	48-72 HOURS	72-96 HOURS	96-120 HOURS	120-144 HOURS	144-168 HOURS
NIL	NIL	NIL	NIL	NIL	NIL	NIL

REMARKS:

THE LOW LEVEL VORTICITY IS AROUND $150 \times 10^{-6} \text{S}^{-1}$ TO THE SOUTHEAST OF SYSTEM CENTER AND VERTICALLY IT IS EXTENDING UPTO 200 HPA LEVEL. LOW LEVEL CONVERGENCE IS ABOUT $20 \times 10^{-5} \text{S}^{-1}$ AROUND THE SYSTEM CENTRE. UPPER LEVEL DIVERGENCE IS AROUND $20 \times 10^{-5} \text{S}^{-1}$ TO THE SOUTH-SOUTHEAST OF SYSTEM CENTRE. VERTICAL WIND SHEAR IS LOW TO MODERATE (10-15 KNOTS) AROUND SYSTEM AREA.

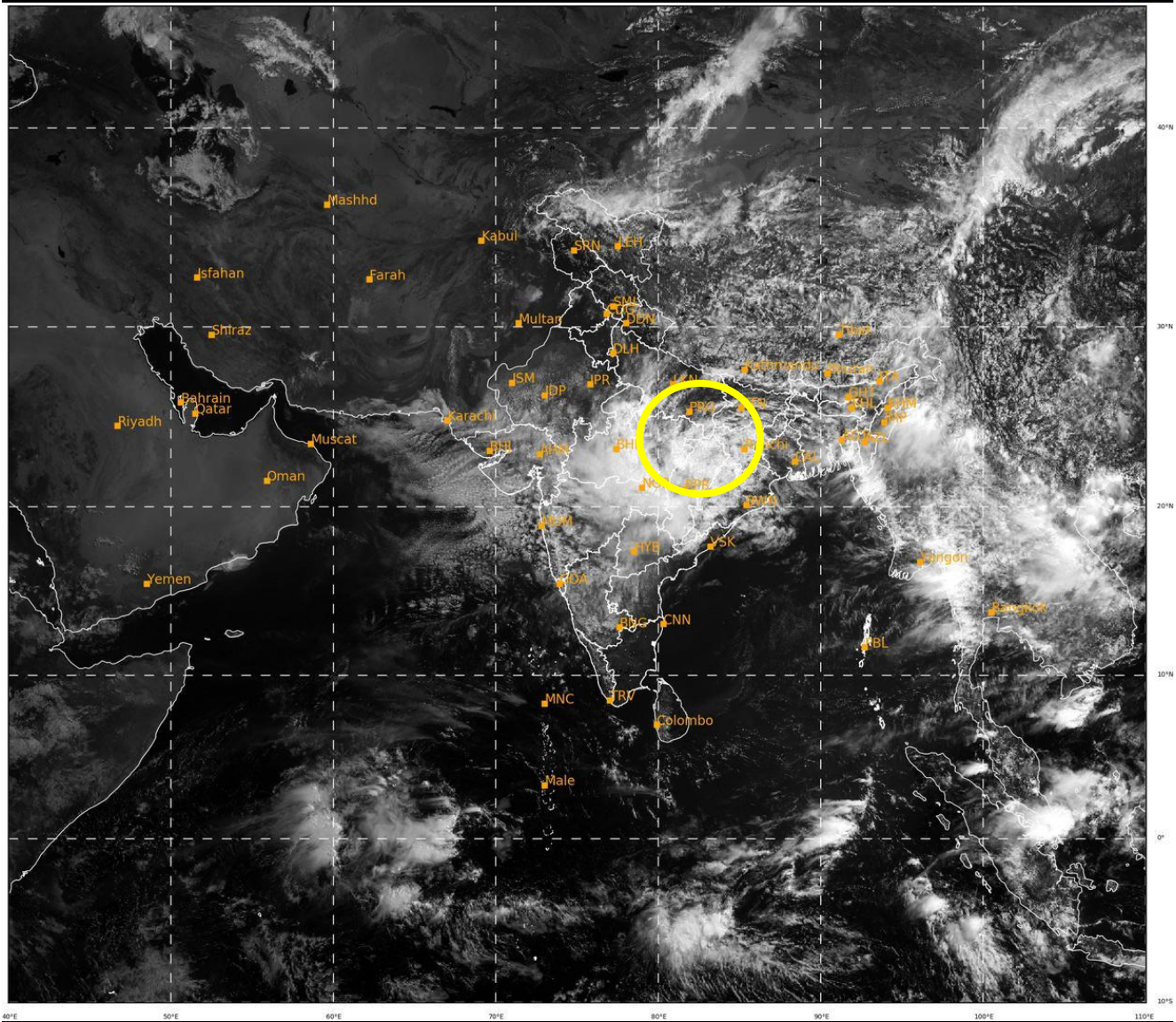
VARIOUS DETERMINISTIC MODELS ARE INDICATING THAT THE SYSTEM IS LIKELY TO MOVE WEST-NORTHWESTWARDS TOWARDS NORTHEAST MADHYA PRADESH AND ADJOINING SOUTHEAST UTTAR PRADESH AND WEAKEN INTO A WELL MARKED LOW PRESSURE AREA DURING NEXT 12 HOURS.

M. SHARMA
Scientist-D, RSMC, New Delhi

Depression (23.5°N, 83.1°E)

SAT : INSAT-3DR IMG
Visible Count 0.65 um
LIC Mercator

03-08-2023/(0445 to 0512) GMT
03-08-2023/(1015 to 1042) IST



40

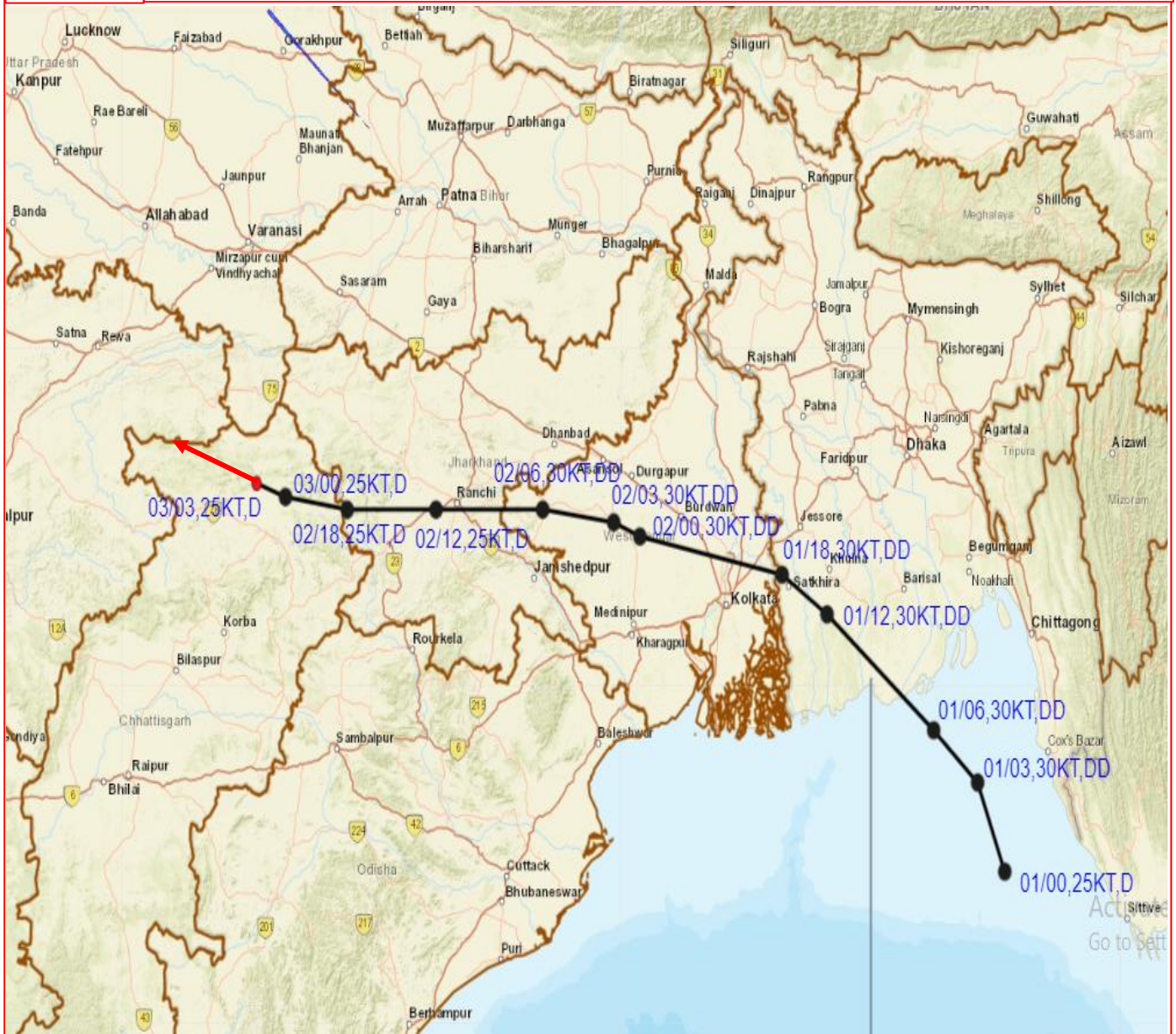
637

IMD,DELHI

Cloud distribution: (a) Isolated: <25%, Scattered:25-50%, Broken: 51-75%, Solid:>75%, Convection Intensity: (a) Weak: Cloud Top Temperature (CTT) >-25°C, (b) Moderate: CTT: - 25°C to -40°C, (c) Intense: CTT: - 41°C to -70°C and (d) Very Intense: : Less than -70°C
PROBABILITY OF CYCLOGENESIS (FORMATION OF DEPRESSION):NIL: 0%, LOW: 1-33%, , MODERATE: 34-66% AND HIGH: 67-100%
This is a guidance Bulletin for WMO/ESCAP Panel Member countries. Visit respective National websites for Country specific Bulletins



OBSERVED AND FORECAST TRACK OF DEPRESSION OVER NORTH CHHATTISGARH BASED ON 0300 UTC (0830 IST) OF 03RD AUGUST 2023.



DATE/TIME IN UTC

IST=UTC + 0530

L: LOW PRESSURE AREA

WML: WELL MARKED LOW PRESSURE AREA

D: DEPRESSION (17-27 KT)

DD: DEEP DEPRESSION (28-33 KT)

CS: CYCLONIC STORM (34-47 KT)

SCS: SEVERE CYCLONIC STORM (48-63KT)

VSCS: VERY SEVERE CYCLONIC STORM (64-89 KT)

ESCS: EXTREMELY SEVERE CYCLONIC STORM (90-119 KT)

SuCS: SUPER CYCLONIC STORM (≥20 KT)

● LESS THAN 34 KT

⊙ 34-47 KT

⊙ ≥ 48 KT

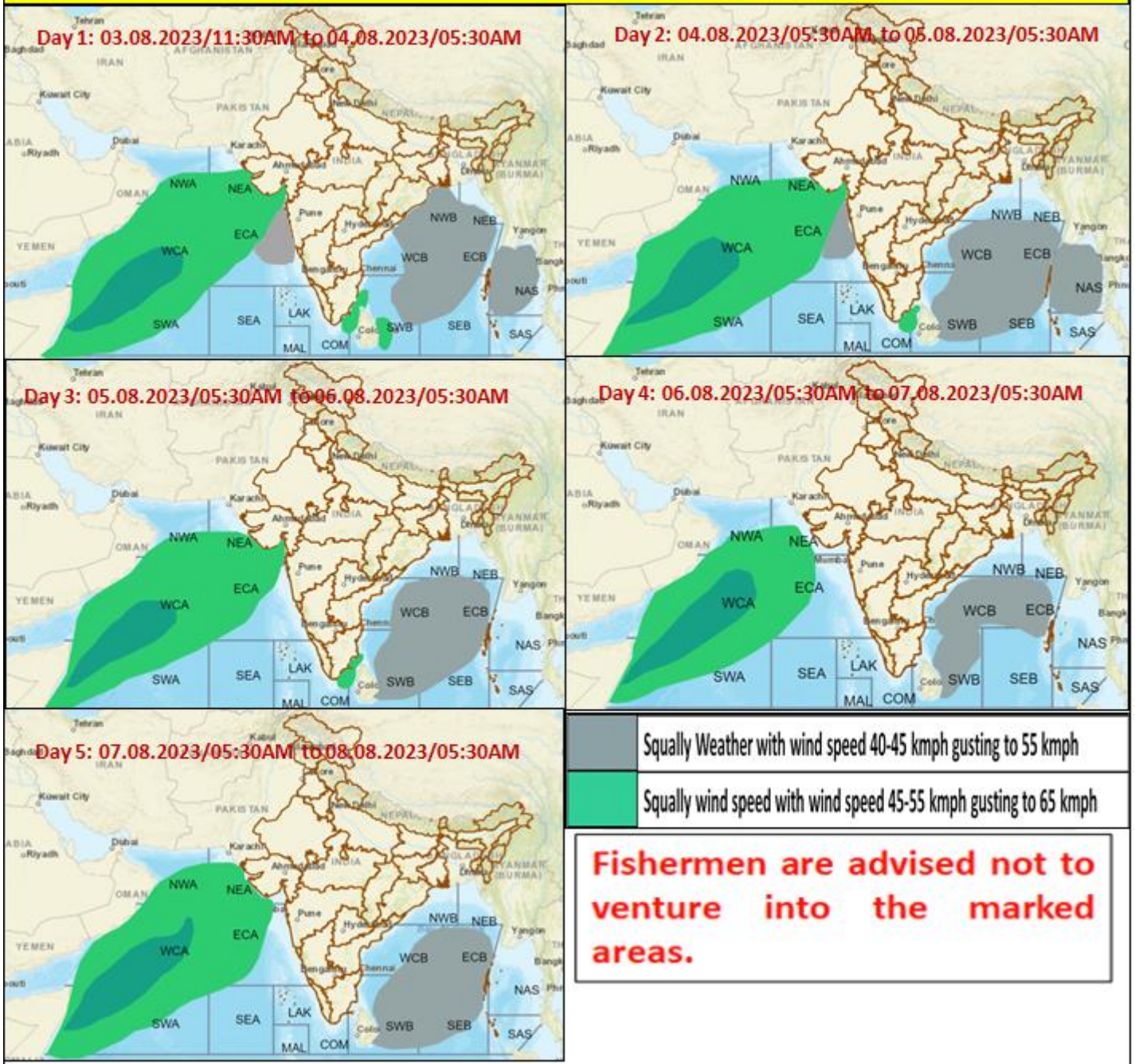
█ OBSERVED TRACK

█ FORECAST TRACK

▲ CONE OF UNCERTAINTY

Cloud distribution: (a) Isolated: <25%, Scattered:25-50%, Broken: 51-75%, Solid:>75%, Convection Intensity: (a) Weak: Cloud Top Temperature (CTT) >-25°C, (b) Moderate: CTT: - 25°C to -40°C, (c) Intense: CTT: - 41°C to -70°C and (d) Very Intense: : Less than -70°C
PROBABILITY OF CYCLOGENESIS (FORMATION OF DEPRESSION):NIL: 0%, LOW: 1-33%, , MODERATE: 34-66% AND HIGH: 67-100%
 This is a guidance Bulletin for WMO/ESCAP Panel Member countries. Visit respective National websites for Country specific Bulletins

Fishermen warning graphics



Cloud distribution: (a) Isolated: <25%, Scattered:25-50%, Broken: 51-75%, Solid:>75%, Convection Intensity: (a) Weak: Cloud Top Temperature (CTT) >25°C, (b) Moderate: CTT: - 25°C to -40°C, (c) Intense: CTT: - 41°C to -70°C and (d) Very Intense: : Less than -70°C
 PROBABILITY OF CYCLOGENESIS (FORMATION OF DEPRESSION):NIL: 0%, LOW: 1-33%, , MODERATE: 34-66% AND HIGH: 67-100%
 This is a guidance Bulletin for WMO/ESCAP Panel Member countries. Visit respective National websites for Country specific Bulletins